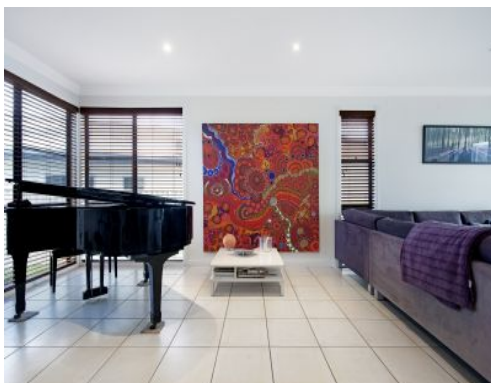


9 Reynolds Avenue Labrador



Built For The Views-Family, Lifestyle, Entertaining

Designed over two levels this elevated executive home boasts uninterrupted views from its enviable hilltop position capturing cool sea breezes and stunning panoramic views.

Built for the growing or extended family this modern and contemporary home offers four spacious bedrooms, multiple indoor and outdoor living spaces, tropical in ground pool and low maintenance easy care gardens.

This property features:

Upper Level:

• King size master suite with full-length walk-in wardrobe + ensuite with corner spa bath

4 BED | 3 BATH | 4 CAR

SOLD

Lisa Amies-Jones

0412 680 188

lisa.amiesjones@harcourts.com.au

9 Reynolds Avenue Labrador

9 REYNOLDS AVE LABRADOR

Harcourts
Coastal

CONTACT: LISA AMIES-JONES 0412 680 188



TOTAL APPROX FLOOR AREA 344 SQ. M
TOTAL APPROX LAND AREA 632 SQ. M.
This plan is for illustrative purposes only.
Any information provided should not be relied upon solely.



GROUND FLOOR
APPROX FLOOR AREA 192 SQ. M.
FIRST FLOOR
APPROX FLOOR AREA 152 SQ. M.